



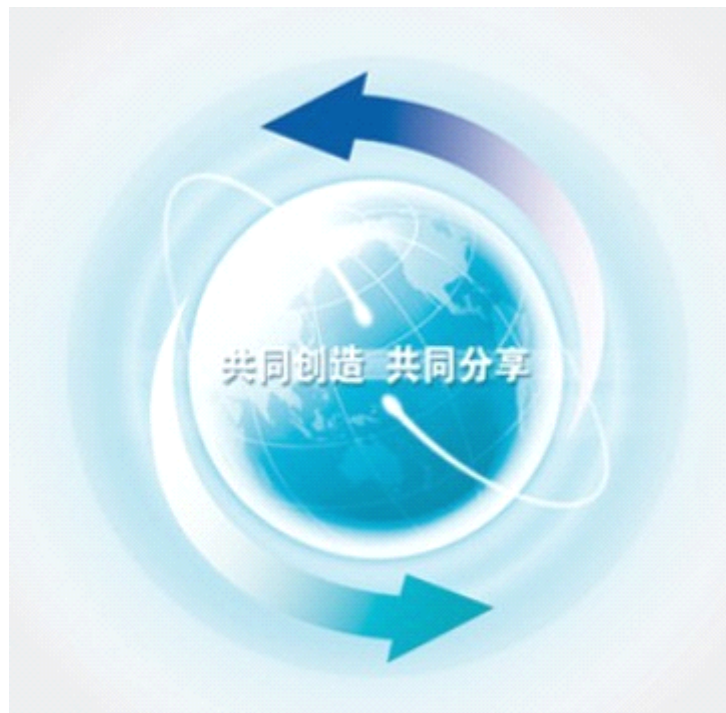
## **Taizhou Crene Biotechnology Co., Ltd.**

Add: Economic Developed Zone of Taizhou Zhejiang China.

Tel: +86-576-88813233 88205808 Fax: +86-576-88229589

Web: <http://www.pharm-intermediates.com>

E-mail: [sales@pharm-intermediates.com](mailto:sales@pharm-intermediates.com)



Taizhou Crene Biotechnology Co., Ltd. is specialized in the manufacture of APIs, pharmaceutical intermediates. Our company is located in the largest API base in China--Taizhou and Cooperated to established GMP standard production base and laboratory in surrounding areas.

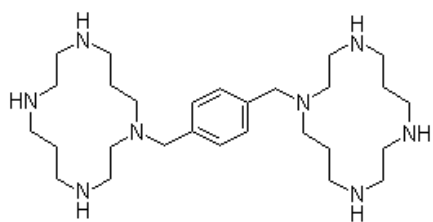
Our belief is "Mutual Benefits, High Efficiency". Our company has made great progress these years. We aim at market analysis, technical innovation and constantly get the supports from the universities and scientific research institution. So we can constantly improve the quality and upgrade our products. Now, the organization is perfect in the company, we possess a complete set of equipment for testing production. Our products sell well both in domestic and foreign market.

Our mainly products are APIs and intermediates of antineoplastic, antibacterial and Prostaglandins etc. For example [Epothilone B](#), [Plerixafor](#), [Everolimus](#), [Temsirolimus](#), [Anidulafungin](#), [Bimatoprost](#), [Latanoprost](#) and its intermediates. Moreover, you can cooperate with us about tailor-made products.

We insist the principle of "Quality first, customer foremost, best credit and best service, be pioneering and creative", looking forward to establishing good business relationships with customers all over the world. Let's work together for bright future!

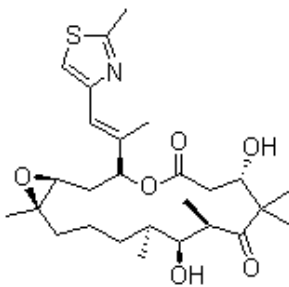
Plerixafor Cas no:110078-46-1, **in stock**

Assay:  $\geq 99\%$  Packing: 1g/Bag, 5g/Bag...



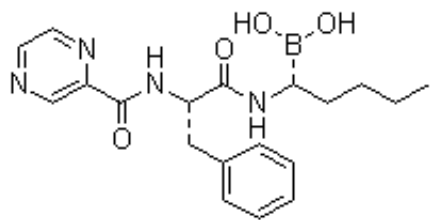
Epothilone B Cas no:152044-54-7, **in stock**

Assay:  $\geq 99\%$  Packing: 1g/Bag, 2g/Bag...



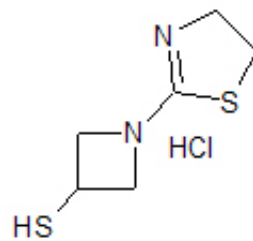
Bortezomib Cas no:179324-69-7, **in stock**

Assay:  $\geq 99\%$  Packing: 1g/Bag, 10g/Bag...



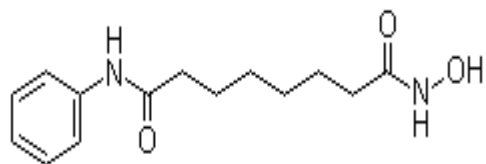
tibipenem side chain Cas no:179337-57-6, **in stock**

Assay:  $\geq 98\%$  Packing: 100g/Bag, 1kg/Bag...



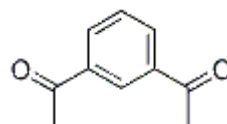
Vorinostat Cas no:149647-78-9, **in stock**

Assay:  $\geq 99\%$  Packing: 100g/Bag, 1kg/Bag...



1,3-Diacetylbenzene Cas no:6781-42-6, **in stock**

Assay:  $\geq 98.5\%$  Packing: 1Kg/Drum, 25kg/Drum...



NO	Product name	CAS NO	STANDARD	Packing
CR1001	Rapamycin/Sirolimus	53123-88-9	≥99%(HPLC) GMP DMF	In stock, 5g/bag 100g/tin
CR1002	Everolimus	159351-69-6	95%-102% (HPLC)	In stock, 1g/bag 5g/bag
CR1003	Temsirolimus	162635-04-3	≥99%(HPLC)	In stock, 1g/bag 5g/bag
CR1004	Deforolimus	572924-54-0	≥95%(HPLC)	In stock, 1mg/vial 10mg/vial
CR1005	Tacrolimus	104987-11-3	≥99%(HPLC) GMP DMF	In stock, 5g/bag 100g/tin...
CR1006	Bimatoprost	155206-00-1	≥99%(HPLC)	In stock, 1g/bag 5g/bag...
CR1007	Latanoprost	130209-82-4	≥99%(HPLC)	In stock, 1g/vial 5g/vial...
CR1008	Travoprost	157283-68-6	≥99%(HPLC)	In stock, 1g/vial 5g/vial...
CR1009	Cloprostenol	40665-92-7	≥99%(HPLC)	In stock, 1g/bag 5g/bag...
CR1010	Lubiprostone	136790-76-6 333963-40-9	≥99%(HPLC)	In stock, 1g/bag 5g/bag...
CR1011	Casposfungin	162808-62-0	≥95%(HPLC)	1g/bag 5g/bag...
CR1012	Anidulafungin	166663-25-8	≥95%(HPLC)	1g/bag 5g/bag...
CR1013	Nelarabine	121032-29-9	≥99%(HPLC)	In stock, 10g/bag 100g/bag...
CR1014	Clofarabine	123318-82-1	≥99%(HPLC)	1g/bag 5g/bag...
CR1015	Decitabine	2353-33-5	≥99%(HPLC)	In stock, 1g/bag 5g/bag...
CR1016	sitafloxacin Hydrate	163253-35-8	≥99%(HPLC)	In stock, 1g/bag 5g/bag...
CR1017	sitafloxacin isomer II (RSR)	1271199-06-8	≥97%(HPLC)	In stock, 30mg/vial 60mg/vial
CR1018	sitafloxacin isomer I (SSR)	127254-11-9	≥97%(HPLC)	In stock, 30mg/vial 60mg/vial
CR1019	sitafloxacin isomer III (RRS)	127254-10-8	≥97%(HPLC)	In stock, 30mg/vial 60mg/vial
CR1020	1,4-Diacetylbenzene	1009-61-6	≥98%(HPLC)	1kg/bag 25kg/drum...
CR1021	FLavopiridol	146426-40-6	≥98%(HPLC)	In stock, 1g/bag 5g/bag ...
CR1022	Peramivir	1041434-82-5	≥99%(HPLC)	In stock, 1g/bag 5g/bag...
CR1023	BMS512148	461432-26-8	≥98%(HPLC)	In stock, 1g/bag 5g/bag ...
CR1024	BMS777607	1196681-44-3	≥98%(HPLC)	In stock, 1g/bag 5g/bag...
CR1025	Disufenton sodium (NXY-059)	168021-79-2	≥99%(HPLC)	In stock, 1g/bag 5g/bag...
CR1026	VX950	402957-28-2	≥99%(HPLC)	In stock, 1g/bag 5g/bag...
CR1027	VX809	936727-05-8	≥99%(HPLC)	1g/bag 5g/bag...
CR1028	VX680	639089-54-6	≥99%(HPLC)	In stock, 1g/bag 5g/bag...
CR1028	Geldanamycin	30562-34-6	≥98%(HPLC)	In stock, 1g/bag 5g/bag...

CR1029	Alvespimycin	467214-20-6	≥98%(HPLC)	1g/bag 5g/bag...
CR1030	Dihydro-FK 506	104987-30-6	≥98%(HPLC)	In stock, 1g/bag 5g/bag...
CR1031	ECHINOCANDIN B	79411-15-7	≥71%(HPLC)	In stock, 1g/bag 5g/bag...
CR1032	Epothilone B	152044-54-7	≥98%(HPLC)	In stock, 1g/bag 5g/bag...
CR1033	Pimecrolimus	137071-32-0	≥98%(HPLC)	In stock, 1g/bag 5g/bag...
CR1034	Ascomycin	104987-12-4	≥95%(HPLC)	In stock, 1g/bag 5g/bag...
CR1035	Daptomycin	103060-53-3	≥98%(HPLC)	In stock, 1g/bag 5g/bag...
CR1036	Bleomycin sulfate	9041-93-4	≥98%(HPLC)	In stock, 1g/bag 5g/bag...
CR1037	Teicoplanin	61036-62-2	≥98%(HPLC)	In stock, 1g/bag 1kg/bag...
CR1038	Alprostadil	745-65-3	≥98%(HPLC)	1g/bag 5g/bag...
CR1039	Prostaglandin F2a	551-11-1	≥98%(HPLC)	1g/bag 5g/bag...
CR1040	Isopropyl unoprostone	120373-24-2	≥99%(HPLC)	1g/bag 5g/bag...
CR1041	Tafluprost	209860-87-7	≥99%(HPLC)	1g/bag 5g/bag...
CR1042	Treprostinil sodium	289480-64-4 81846-19-7(acid)	≥99%(HPLC)	1g/bag 5g/bag...
CR1043	Beraprost sodium	88475-69-8 88430-50-6(acid)	≥99%(HPLC)	1g/bag 5g/bag...
CR1044	Iloprost	78919-13-8	≥99%(HPLC)	1g/bag 5g/bag...
CR1045	Misoprostol	59122-46-2	≥99%(HPLC)	1g/bag 5g/bag...
CR1046	Prostacyclin sodium salt Epoprostenol sodium	61849-14-7	≥99%(HPLC)	1g/bag 5g/bag...
CR1047	Carboprost tromethamine	58551-69-2	≥99%(HPLC)	1g/bag 5g/bag...
CR1048	Carboprost	35700-23-3	≥99%(HPLC)	1g/bag 5g/bag...
CR1049	Etiproston	59619-81-7	≥99%(HPLC)	1g/bag 5g/bag...
CR1050	Gemeprost	64318-79-2	≥99%(HPLC)	1g/bag 5g/bag...
CR1051	Limaprost	74397-12-9	≥99%(HPLC)	1g/bag 5g/bag...
CR1052	Dinoprost Trometamol	38562-01-5	≥99%(HPLC)	1g/bag 5g/bag...
CR1053	Dinoprostone	363-24-6	≥99%(HPLC)	1g/bag 5g/bag...
CR1054	Masitinib	790299-79-5	≥99%(HPLC)	In stock, 1g/bag 5g/bag...
CR1055	Tandutinib	387867-13-2	≥99%(HPLC)	In stock, 1g/bag 5g/bag...
CR1056	Axitinib	319460-85-0	≥99%(HPLC)	In stock, 1g/bag 5g/bag...
CR1057	Bosutinib	380843-75-4	≥99%(HPLC)	In stock, 1g/bag 5g/bag...
CR1058	Canertinib	267543-28-7	≥99%(HPLC)	In stock, 1g/bag 5g/bag...
CR1059	Saracatinib (AZD0530)	379231-04-6	≥99%(HPLC)	In stock, 1g/bag 5g/bag...
CR1060	Neratinib (HKI-272)	698387-09-6	≥99%(HPLC)	In stock, 1g/bag 5g/bag...
CR1061	Pelitinib (EKB569)	257933-82-7	≥99%(HPLC)	In stock, 1g/bag 5g/bag...
CR1062	Pazopanib	444731-52-6	≥99%(HPLC)	In stock, 1g/bag 5g/bag...

CR1063	Dasatinib	302962-49-8	≥99%(HPLC)	In stock, 1kg/bag 5kg/bag...
CR1064	Erlotinib HCl	183319-69-9	≥99%(HPLC)	In stock, 1kg/bag 5kg/bag...
CR1065	Gefitinib	184475-35-2	≥99%(HPLC)	In stock, 1kg/bag 5kg/bag...
CR1066	Imatinib mesylate	220127-57-1	≥99%(HPLC)	In stock, 1kg/bag 5kg/bag...
CR1067	Lapatinib	231277-92-2	≥99%(HPLC)	In stock, 1kg/bag 5kg/bag...
CR1068	Lapatinib ditosylate	388082-78-8	≥99%(HPLC)	In stock, 1kg/bag 5kg/bag...
CR1069	Nilotinib	641571-10-0	≥99%(HPLC)	In stock, 1kg/bag 5kg/bag...
CR1070	Sorafenib Tosylate	475207-59-1	≥99%(HPLC)	In stock, 1kg/bag 5kg/bag...
CR1071	Sorafenib	284461-73-0	≥99%(HPLC)	1kg/bag 5kg/bag...
CR1072	Sunitinib base	557795-19-4	≥99%(HPLC)	1kg/bag 5kg/bag...
CR1073	Sunitinib malate	341031-54-7	≥99%(HPLC)	In stock, 1kg/bag 5kg/bag...
CR1074	Daunorubicin hydrochloride	23541-50-6	≥99%(HPLC)	In stock, 1kg/bag 5kg/bag...
CR1075	Doxorubicin HCl	25316-40-9	≥99%(HPLC)	In stock, 1g/bag 5g/bag...
CR1076	Epirubicin HCl	56390-09-1	≥95%(HPLC)	In stock, 1g/bag 5g/bag...
CR1077	Idarubicin HCl	57852-57-0	≥95%(HPLC)	In stock, 1g/bag 5g/bag...
CR1078	Pirarubicin	72496-41-4	≥95%(HPLC)	In stock, 1g/bag 5g/bag...
CR1079	Amrubicin HCL	92470-31-0	≥99%(HPLC)	1g/bag 5g/bag...
CR1080	Lenalidomide	191732-72-6	≥99%(HPLC)	In stock, 1kg/bag 5kg/bag...
CR1081	Retigabine	150812-12-7	≥99%(HPLC)	In stock, 100g/bag 1kg/bag...
CR1082	Dorzolomide hydrochloride	130693-82-2	≥99%(HPLC)	In stock, 1kg/bag 5kg/bag...
CR1083	Prasugrel	150322-43-3	≥99%(HPLC)	In stock, 1kg/bag 5kg/bag...
CR1084	Pixantrone	144510-96-3	≥99%(HPLC)	In stock, 1g/bag 5g/bag...
CR1085	Entecavir	142217-69-4	≥99%(HPLC)	In stock, 1g/bag 5g/bag...
CR1086	Entecavir hydrate	209216-23-9	≥99%(HPLC)	In stock, 1g/bag 5g/bag...
CR1087	Fludarabine	21679-14-1	≥99%(HPLC)	In stock, 1g/bag 5g/bag...
CR1088	Dapiprazole HCL	72822-13-0	≥99%(HPLC)	In stock, 1g/bag 5g/bag...
CR1089	Sitagliptin monohydrate	654671-77-9	≥99%(HPLC)	In stock, 1g/bag 5g/bag...
CR1090	Bosentan	157212-55-0	≥99%(HPLC)	In stock, 1g/bag 5g/bag...
CR1091	Decitabine	2353-33-5	≥99%(HPLC)	In stock, 1g/bag 5g/bag...
CR1092	Bortezomib	179324-69-7	≥99%(HPLC)	In stock, 1g/bag 5g/bag...
CR1093	bendamustine hydrochloride	3543-75-7	≥99%(HPLC)	In stock, 1g/bag 5g/bag...
CR1094	Bortezomib-pinandediol	205393-22-2	≥99%(HPLC)	In stock, 1g/bag 5g/bag...
CR1095	Calcipotriene	112965-21-6	≥99%(HPLC)	1g/bag 5g/bag...
CR1096	Calcitriol	32222-06-3	≥99%(HPLC)	In stock, 1g/bag 5g/bag...
CR1097	Alfacalcidol	41294-56-8	≥99%(HPLC)	In stock, 1g/bag 5g/bag...

CR1098	Fulvestrant	129453-61-8	≥99%(HPLC)	In stock, 1g/bag 5g/bag...
CR1099	Vildagliptin	274901-16-5	≥99%(HPLC)	In stock, 1g/bag 5g/bag...
CR1100	Argatroban	74863-84-6	≥99%(HPLC)	In stock, 1g/bag 5g/bag...
CR1101	Fondaparinux sodium	114870-03-0	≥99%(HPLC)	1g/bag 5g/bag...
CR1102	Clopidogrel hydrogen sulfate	120202-66-6	≥99%(HPLC)	1g/bag 5g/bag...
CR1103	Aliskiren Hemifumarate	173334-58-2	≥99%(HPLC)	In stock, 1g/bag 5g/bag...
CR1104	Reboxetine mesylate base	71620-89-8	≥99%(HPLC)	1g/bag 5g/bag...
CR1105	Nimustine hydrochloride	55661-38-6	≥99%(HPLC)	100g/bag 1kg/bag...
CR1106	Fotemustine	92118-27-9	≥99%(HPLC)	100g/bag 1kg/bag...
CR1107	Carmustinum	154-93-8	≥99%(HPLC)	100g/bag 1kg/bag...
CR1108	Uraphetinum	66-75-1	≥99%(HPLC)	100g/bag 1kg/bag...
CR1109	Lomustinum	13010-47-4	≥99%(HPLC)	100g/bag 1kg/bag...
CR1110	Thio-TEPA	52-24-4	≥99%(HPLC)	In stock, 100g/bag 1kg/bag...
CR1111	Capecitabine	154361-50-9 (158798-73-3)	≥99%(HPLC)	In stock, 1kg/bag 25kg/bag...
CR1112	Gestodene	60282-87-3	≥99%(HPLC)	In stock, 1g/bag 5g/bag...
CR1113	CUDC-101	1012054-59-9	≥98%(HPLC)	1g/bag 5g/bag...
CR1114	Zibotentan (ZD4054)	186497-07-4	≥98%(HPLC)	1g/bag 5g/bag...
CR1115	IC-87114 (IC87114)	371242-69-2	≥98%(HPLC)	1g/bag 5g/bag...
CR1116	E7080	417716-92-8	≥98%(HPLC)	1g/bag 5g/bag...
CR1117	BIX02188	1094614-84-2	≥98%(HPLC)	In stock, 1g/bag 5g/bag...
CR1118	MGCD-265	875337-44-3	≥98%(HPLC)	In stock, 1g/bag 5g/bag...
CR1119	Dapagliflozin BMS-512148	461432-26-8	≥98%(HPLC)	In stock, 1g/bag 5g/bag...
CR1120	(S)-HDAC-42, AR-42	935881-37-1	≥98%(HPLC)	In stock 300MG, 1g/bag 5g/bag
CR1121	Cabozantinib, XL184	849217-68-1	≥98%(HPLC)	In stock, 1g/bag 5g/bag...
CR1122	INCB018424 (Ruxolitinib)	941678-49-5 1092939-17-7	≥98%(HPLC)	In stock, 1g/bag 5g/bag...
CR1123	Y27632	146986-50-7	≥98%(HPLC)	In stock, 1g/bag 5g/bag...
CR1124	BIBF-1120	928326-83-4	≥98%(HPLC)	In stock, 1g/bag 5g/bag...
CR1125	gsk690693	937174-76-0	≥98%(HPLC)	In stock, 1g/bag 5g/bag...
CR1126	DAPT	208255-80-5	≥98%(HPLC)	In stock, 1g/bag 5g/bag...
CR1127	PP242	1092351-67-1	≥98%(HPLC)	In stock, 1g/bag 5g/bag...
CR1128	ABT888	912444-00-9	≥98%(HPLC)	In stock, 1g/bag 5g/bag...
CR1129	R406	841290-80-0	≥98%(HPLC)	In stock, 1g/bag 5g/bag...
CR1130	CAL-101	870281-82-6	≥98%(HPLC)	In stock, 1g/bag 5g/bag...
CR1131	TAME	901-47-3	≥98%(HPLC)	1g/bag 5g/bag...

CR1132	Calcitriol	32222-06-3	≥98%(HPLC)	In stock, 1g/bag 5g/bag...
CR1133	ku60019	925701-49-1	≥98%(HPLC)	In stock, 1g/bag 5g/bag.
CR1134	PLX4720	918505-84-7	≥98%(HPLC)	In stock, 1g/bag 5g/bag...
CR1135	ku0063794	938440-64-3	≥98%(HPLC)	In stock, 1g/bag 5g/bag...
CR1136	osi-420	183321-86-0	≥98%(HPLC)	In stock, 1g/bag 5g/bag...
CR1137	Thiazovivin	1226056-71-8	≥98%(HPLC)	In stock, 1g/bag 5g/bag...
CR1138	NVP-BHG712	940310-85-0	≥98%(HPLC)	In stock, 1g/bag 5g/bag...
CR1139	GDC0941	957054-30-7	≥98%(HPLC)	In stock, 1g/bag 5g/bag...
CR1140	PD0325901	391210-10-9	≥98%(HPLC)	In stock, 1g/bag 5g/bag...
CR1141	plx4032	1029872-54-5	≥98%(HPLC)	In stock, 1g/bag 5g/bag...
CR1142	XL147	956958-53-5	≥98%(HPLC)	In stock, 1g/bag 5g/bag...
CR1143	azd7762	860352-01-8	≥98%(HPLC)	In stock, 1g/bag 5g/bag...
CR1144	Sb207499 Cilomilast	153259-65-5	≥98%(HPLC)	1g/bag 5g/bag...
CR1145	BIX02188	1094614-84-2	≥98%(HPLC)	In stock, 1g/bag 5g/bag...
CR1146	BIX02189	1094614-85-3	≥98%(HPLC)	In stock, 1g/bag 5g/bag...
CR1147	Mk2206	1032350-13-2	≥98%(HPLC)	1g/bag 5g/bag...
CR1148	HMN-214	173529-46-9	≥98%(HPLC)	1g/bag 5g/bag...
CR1149	Itmn-191 Danoprevir	850876-88-9	≥98%(HPLC)	In stock, 1g/bag 5g/bag...
CR1150	MDV3100	915087-33-1	≥98%(HPLC)	In stock, 1g/bag 5g/bag...
CR1151	Jnj7706621	443797-96-4	≥98%(HPLC)	1g/bag 5g/bag...
CR1152	MK-2866 Ostarine	1202044-20-9	≥98%(HPLC)	1g/bag 5g/bag...
CR1153	MGCD-265	875337-44-3	≥98%(HPLC)	1g/bag 5g/bag...
CR1154	azd2281 Olaparib	763113-22-0 937799-91-2	≥98%(HPLC)	In stock, 1g/bag 5g/bag...
CR1155	AV951 Tivozanib	475108-18-0	≥98%(HPLC)	In stock, 1g/bag 5g/bag...
CR1156	TSU-68	252916-29-3	≥98%(HPLC)	In stock, 1g/bag 5g/bag...
CR1157	BIBW2992 Afatinib	439081-18-2	≥98%(HPLC)	1g/bag 5g/bag...
CR1158	VX 222	1026785-59-0	≥98%(HPLC)	In stock, 1g/bag 5g/bag...
CR1159	BMS-599626	8173837-23-1	≥98%(HPLC)	In stock, 1g/bag 5g/bag...
CR1160	CYT387	1056634-68-4	≥98%(HPLC)	In stock, 1g/bag 5g/bag...
CR1161	OSI-906 Linsitinib	867160-71-2	≥98%(HPLC)	In stock, 1g/bag 5g/bag...
CR1162	Peramivir Trihydrate	1041434-82-5	≥98%(HPLC)	In stock, 1g/bag 5g/bag...
CR1163	Sitaxsentan sodium	210421-74-2	≥98%(HPLC)	In stock, 1g/bag 5g/bag...
CR1164	Alovudine	25526-93-6	≥98%(HPLC)	In stock, 1g/bag 5g/bag...
CR1165	Crizotinib	877399-52-5	≥98%(HPLC)	In stock, 1g/bag 5g/bag...
CR1166	Selumetinib	606143-52-6	≥98%(HPLC)	In stock, 1g/bag 5g/bag...
CR1167	Cediranib	288383-20-0	≥98%(HPLC)	In stock, 1g/bag 5g/bag...

CR1168	CP 690550	477600-75-2	≥98%(HPLC)	In stock, 1g/bag 5g/bag...
CR1169	BI 2536	755038-02-9	≥98%(HPLC)	1g/bag 5g/bag...
CR1170	Doramapimod	285983-48-4	≥98%(HPLC)	1g/bag 5g/bag...
CR1171	PD 184352	212631-79-3	≥98%(HPLC)	In stock, 1g/bag 5g/bag...
CR1172	Brivanib	649735-46-6	≥98%(HPLC)	1g/bag 5g/bag...
CR1173	Panobinostat	404950-80-7	≥98%(HPLC)	1g/bag 5g/bag...
CR1174	GW 843682X	660868-91-7	≥98%(HPLC)	1g/bag 5g/bag...
CR1175	Prucalopride Succinate	179474-85-2	≥99%(HPLC)	In stock, 1g/bag 5g/bag...
CR1176	Prucalopride	179474-81-8	≥99%(HPLC)	In stock, 1g/bag 5g/bag...
CR1177	SU11274	658084-23-2	≥98%(HPLC)	In stock, 1g/bag 5g/bag...
CR1178	BMS-794833	1174046-72-0	≥98%(HPLC)	In stock, 1g/bag 5g/bag...
CR1179	Foretinib	849217-64-7	≥98%(HPLC)	In stock, 1g/bag 5g/bag...
CR1180	LY2157299	700874-72-2	≥98%(HPLC)	In stock, 1g/bag 5g/bag...
CR1181	AC220	950769-58-1	≥98%(HPLC)	1g/bag 5g/bag...
CR1182	AP24534 Ponatinib	943319-70-8	≥98%(HPLC)	1g/bag 5g/bag...
CR1183	CX-4945 Silmitasertib	1009820-21-6	≥98%(HPLC)	1g/bag 5g/bag...
CR1184	JNJ38877605	943540-75-8	≥98%(HPLC)	1g/bag 5g/bag...
CR1185	KU55933	587871-26-9	≥98%(HPLC)	1g/bag 5g/bag...
CR1186	Mubritinib	366017-09-6	≥98%(HPLC)	1g/bag 5g/bag...
CR1187	PIK-90	677338-12-4	≥98%(HPLC)	1g/bag 5g/bag...
CR1188	R788, Fostamatinib	1025687-58-4	≥98%(HPLC)	1g/bag 5g/bag...
CR1189	VX702	479543-46-9 745833-23-2	≥98%(HPLC)	1g/bag 5g/bag...
CR1190	BIIB021	848695-25-0	≥98%(HPLC)	In stock, 1g/bag 5g/bag...
CR1191	GDC-0449	879085-55-9	≥98%(HPLC)	In stock, 1g/bag 5g/bag...
CR1192	ly2603618 IC-83	911222-45-2	≥98%(HPLC)	1g/bag 5g/bag...
CR1193	GSK1349572	1051375-16-6	≥98%(HPLC)	1g/bag 5g/bag...
CR1194	azd8055	1009298-09-2	≥98%(HPLC)	1g/bag 5g/bag...
CR1195	DMXAA Vadimezan	117570-53-3	≥98%(HPLC)	In stock, 1g/bag 5g/bag...
CR1196	PF03716556	928774-43-0	≥98%(HPLC)	In stock, 1g/bag 5g/bag...
CR1197	MCOPPB trihydrochloride	1028969-49-4	≥98%(HPLC)	In stock, 1g/bag 5g/bag...
CR1198	UK 383367	348622-88-8	≥98%(HPLC)	In stock, 1g/bag 5g/bag...
CR1199	GSK2126458	1086062-66-9	≥98%(HPLC)	In stock, 1g/bag 5g/bag...
CR1200	GSK1120212	871700-17-3	≥98%(HPLC)	In stock, 1g/bag 5g/bag...
CR1201	PNU 120596	501925-31-1	≥98%(HPLC)	In stock, 1g/bag 5g/bag...
CR1202	MRS 2578	711019-86-2	≥98%(HPLC)	In stock, 1g/bag 5g/bag...
CR1203	ARRY-543	114629-86-8	≥98%(HPLC)	In stock, 1g/bag 5g/bag...

CR1204	WAY-100635 maleate salt	634908-75-1	≥98%(HPLC)	In stock, 1g/bag 5g/bag...
CR1205	MK-0524 Laropiprant	571170-77-9	≥98%(HPLC)	In stock, 1g/bag 5g/bag...
CR1206	Torin 1	1222998-36-8	≥98%(HPLC)	In stock, 1g/bag 5g/bag...
CR1207	PF3845	1196109-52-0	≥98%(HPLC)	In stock, 1g/bag 5g/bag...
CR1208	NVP-BKM-120	944396-07-0	≥98%(HPLC)	In stock, 1g/bag 5g/bag...
CR1209	RU58841	154992-24-2	≥98%(HPLC)	In stock, 1g/bag 5g/bag...
CR1210	TAK-700	426219-53-6	≥98%(HPLC)	In stock, 1g/bag 5g/bag...
CR1211	ICG-001	847591-62-2	≥98%(HPLC)	In stock, 1g/bag 5g/bag...
CR1212	OSI-027	936890-98-1	≥98%(HPLC)	In stock, 1g/bag 5g/bag...
CR1213	A 922500	959122-11-3	≥98%(HPLC)	In stock, 1g/bag 5g/bag...
CR1214	WYE125132	1144068-46-1	≥98%(HPLC)	In stock, 1g/bag 5g/bag...
CR1215	abt869 , Linifanib	796967-16-3	≥98%(HPLC)	In stock, 1g/bag 5g/bag...
CR1216	Faropenem sodium	122547-49-3	≥98%(HPLC)	In stock, 1g/bag 5g/bag...
CR1217	Rivastigmine tartrate	129101-54-8	≥98%(HPLC)	In stock, 1g/bag 5g/bag...
CR1218	Raltegravir potassium	871038-72-1	≥98%(HPLC)	1g/bag 5g/bag...
CR1219	1,3-Diacetylbenzene	6781-42-6	≥98%(HPLC)	In stock, 1g/bag 5g/bag...
CR1220	1,4-Diacetylbenzene	1009-61-6	≥98%(HPLC)	1g/bag 5g/bag...
CR1221	Plerixafor hcl	155148-31-5	≥98%(HPLC)	In stock, 1g/bag 5g/bag...
CR1222	Vorinostat	149647-78-9	≥98%(HPLC)	In stock, 1g/bag 5g/bag...
CR1223	Silodosin	160970-54-7	≥98%(HPLC)	1g/bag 5g/bag...
CR1224	Adapalene	106685-40-9	≥98%(HPLC)	1g/bag 5g/bag...
CR1225	Abacavir sulfate	188062-50-2	≥98%(HPLC)	1g/bag 5g/bag...
CR1226	Dronedarone hydrochloride	141625-93-6	≥98%(HPLC)	1g/bag 5g/bag...
CR1227	Azatadinemaleate	3978-86-7	≥98%(HPLC)	In stock, 1g/bag 5g/bag...
CR1228	TP-2 (TV-EDI)	53872-60-9	≥98%(HPLC)	1g/bag 5g/bag...
CR1229	Minodronic acid	180064-38-4 (127657-42-5)	≥98%(HPLC)	1g/bag 5g/bag...
CR1230	Dapoxetine hydrochloride	119356-77-3	≥98%(HPLC)	1g/bag 5g/bag...
CR1231	Asenapine Maleate	85650-56-2	≥98%(HPLC)	1g/bag 5g/bag...
CR1232	Fingolimod Hcl	162359-56-0	≥98%(HPLC)	In stock, 1g/bag 5g/bag...
CR1233	Domperidone	57808-66-9	≥98%(HPLC)	1g/bag 5g/bag...
CR1234	Tenofovir	147127-20-6	≥99%(HPLC)	In stock, 1kg/bag 25kg/bag...
CR1235	Vinorelbine Tartrate	12531-39-7	≥98%(HPLC)	In stock, 1g/bag 5g/bag...
CR1236	Vinblastine sulfate	143-67-9	≥98%(HPLC)	In stock, 1g/bag 5g/bag...
CR1237	Vinpocetine	42971-09-5	≥98%(HPLC)	1g/bag 5g/bag...
CR1238	Catharanthine	2468-21-5	≥98%(HPLC)	In stock, 1g/bag 5g/bag...

CR1239	Vincristine sulfate	2068-78-2	≥98%(HPLC)	In stock, 1g/bag 5g/bag...
CR1240	Vindesine sulfate	59917-39-4	≥98%(HPLC)	In stock, 1g/bag 5g/bag...
CR1241	Vincamine	1617-90-9	≥98%(HPLC)	1g/bag 5g/bag...
CR1242	Vinflunine	162652-95-1	≥98%(HPLC)	1g/bag 5g/bag...
CR1243	Cefdinir	91832-40-5	≥98%(HPLC)	1g/bag 5g/bag...
CR1244	Maraviroc	376348-65-1	≥98%(HPLC)	In stock, 1g/bag 5g/bag...
CR1245	Paroxetine hydrochloride	78246-49-8	≥98%(HPLC)	1g/bag 5g/bag...
CR1246	Candesartan	139481-59-7	≥98%(HPLC)	1kg/bag 5kg/bag...
CR1247	Candesartan cilexetil	145040-37-5	≥98%(HPLC)	1g/bag 5g/bag...
CR1248	Sofalcone	64506-49-6	≥98%(HPLC)	1kg/bag 25kg/bag...
CR1249	Lornoxicam	70374-39-9	≥98%(HPLC)	1kg/bag 25kg/bag...
CR1250	Ramelteon	196597-26-9	≥98%(HPLC)	1g/bag 5g/bag...
CR1251	Vindoline	2182-14-1	≥98%(HPLC)	In stock, 1g/bag 5g/bag...
CR1252	Saxagliptin	361442-04-8	≥98%(HPLC)	1g/bag 5g/bag...
CR1253	4-Morpholinecarbonyl chloride	15159-40-7	≥98%(HPLC)	1kg/bag 25kg/bag...
CR1254	Melanotan II	121062-08-6	≥98%(HPLC)	1g/bag 5g/bag...
CR1255	Cyclosporin A	59865-13-3	≥98%(HPLC)	In stock, 1g/bag 5g/bag...
CR1256	Cyclosporin B	63775-95-1	≥98%(HPLC)	In stock, 1g/bag 5g/bag...
CR1257	Cyclosporin C	69787-61-0	≥98%(HPLC)	1g/bag 5g/bag...
CR1258	Cyclosporin D	63775-96-2	≥98%(HPLC)	1g/bag 5g/bag...
CR1259	Cyclosporin H	83602-39-5	≥98%(HPLC)	1g/bag 5g/bag...
CR1260	Dihydrocyclosporin A	11140-99-1	≥98%(HPLC)	1g/bag 5g/bag...
CR1261	Dihydrocyclosporin	63556-15-0	≥98%(HPLC)	1g/bag 5g/bag...
CR1262	Dihydrocyclosporin	63775-91-7	≥98%(HPLC)	1g/bag 5g/bag...
CR1263	Isocyclosporin A	134998-06-4	≥98%(HPLC)	1g/bag 5g/bag...
CR1264	Pristinamycin	11006-76-1	≥98%(HPLC)	1g/bag 5g/bag...
CR1265	Pixantrone Maleate	144675-97-8	≥98%(HPLC)	In stock, 1g/bag 5g/bag...
CR1266	Mizoribine	50924-49-7	≥98%(HPLC)	In stock, 1g/bag 5g/bag...
CR1267	Ramosetron hydrochloride	132907-72-3	≥99%(HPLC)	1g/bag 5g/bag...
CR1268	Ciprofibrate	52214-84-3	≥99%(HPLC)	1kg/bag 25kg/bag...
CR1269	cis-Jasmone	488-10-8	≥99%(HPLC)	1kg/bag 25kg/bag...
CR1270	side chain for Doripenem	491878-06-9	≥98%(HPLC)	In stock, 1kg/bag 5kg/bag...
CR1271	Matrine	519-02-8	≥99%(HPLC)	In stock, 1Kg/bag 25Kg/bag...
CR1272	oxymatrine	16837-52-8	≥99%(HPLC)	In stock, 1Kg/bag 253g/bag...
CR1273	Brinzolamide	138890-62-7	≥99%(HPLC)	1g/bag 5g/bag...
CR1274	Solifenacin succinate	242478-38-2	≥99%(HPLC)	1kg/bag 25kg/bag...

CR1275	Temozolomide	85622-93-1	≥99%(HPLC)	In stock, 1kg/bag 25kg/bag...
CR1276	Micafungin	235114-32-6	≥99%(HPLC)	1g/bag 5g/bag...
CR1277	Clozapine	5786-21-0	≥99%(HPLC)	1kg/bag 25kg/bag...
CR1278	Olanzapine	132539-06-1	≥99%(HPLC)	1kg/bag 25kg/bag...
CR1279	Gliclazide	21187-98-4	≥99%(HPLC)	1kg/bag 25kg/bag...
CR1280	Olopatadine	113806-05-6	≥99%(HPLC)	1kg/bag 25kg/bag...
CR1281	Gemfibrozil	25812-30-0	≥99%(HPLC)	1kg/bag 25kg/bag...
CR1282	Bicalutamide	90357-06-5	≥99%(HPLC)	1kg/bag 25kg/bag...
CR1283	Emtricitabine	143491-57-0	≥99%(HPLC)	In stock, 1kg/bag 25kg/bag...
CR1284	Gabapentin	60142-96-3	≥99%(HPLC)	In stock, 1kg/bag 25kg/bag...
CR1285	Rebamipide	111911-87-6	≥99%(HPLC)	In stock, 1kg/bag 25kg/bag...
CR1286	Duloxetine hydrochloride	136434-34-9	≥99%(HPLC)	1kg/bag 25kg/bag...
CR1287	Darifenacin hydrobromide	133099-07-7	≥99%(HPLC)	1kg/bag 25kg/bag...
CR1288	Mirtazapine	61337-67-5	≥99%(HPLC)	1kg/bag 25kg/bag...
CR1289	Tamsulosin hydrochloride	106463-17-6	≥99%(HPLC)	1kg/bag 25kg/bag...
CR1290	Ambrisentan	177036-94-1	≥99%(HPLC)	1kg/bag 25kg/bag...
CR1291	Pemetrexed disodium	150399-23-8	≥99%(HPLC)	1kg/bag 25kg/bag...
CR1292	NVP-BE2235	915019-65-7	≥99%(HPLC)	In stock, 1kg/bag 25kg/bag...
CR1293	(-)-Corey lactone diol	32233-40-2	≥98%(HPLC)	1kg/bag 25kg/bag...
CR1294	(-)-Corey lactone benzoate	39746-00-4	≥98%(HPLC)	1kg/bag 25kg/bag...
CR1295	2',6'-Dihydroxyacetophenone	699-83-2	≥99%(HPLC)	1kg/bag 25kg/bag...
CR1296	Latanoprost Lactol	352276-28-9	≥98%(HPLC)	1kg/bag 25kg/bag...
CR1297	Chlorethini Hydrochloridum	55-86-7	≥99%(HPLC)	1kg/bag 25kg/bag...
CR1298	3,4-Dihydroxybenzaldehyde	139-85-5	≥99%(HPLC)	1kg/bag 25kg/bag...
CR1299	Olopatadine	113806-05-6	≥99%(HPLC)	1kg/bag 25kg/bag...
CR1300	Voriconazole	137234-62-9	≥99%(HPLC)	1g/bag 100g/bag...
CR1301	Tolvaptan	150683-30-0	≥99%(HPLC)	1g/bag 100g/bag...
CR1302	Rasagiline Mesylate	161735-79-1	≥99%(HPLC)	1kg/bag 25kg/bag...
CR1303	Laninamivir	203120-17-6	≥99%(HPLC)	1kg/bag 25kg/bag...
CR1304	Anastrozole	120511-73-1	≥99%(HPLC)	1kg/bag 25kg/bag...
CR1305	Meloxicam	71125-38-7	≥99%(HPLC)	In stock, 1kg/bag 25kg/bag...
CR1306	Ramipril	87333-19-5	≥99%(HPLC)	1kg/bag 25kg/bag...
CR1307	TOK-001	851983-85-2	≥98%(HPLC)	In stock, 1g/bag 5g/bag...
CR1308	Anacetrapil	875446-37-0	≥98%(HPLC)	In stock, 1g/bag 5g/bag...
CR1309	cct137690	1095382-05-0	≥98%(HPLC)	In stock 1g/bag 5g/bag...

CR1310	SB939	929016-96-6	≥98% (HPLC)	In stock 1g/bag 5g/bag...
CR1311	TG100-115	677297-51-7	≥98% (HPLC)	In stock 1g/bag 5g/bag...
CR1312	Valrubicin	56124-62-0	≥98% (HPLC)	In stock 1g/bag 5g/bag...
CR1313	osu-03012	742112-33-0	≥98% (HPLC)	1g/bag 5g/bag...
CR1314	AG-490	133550-30-8	≥98% (HPLC)	1g/bag 5g/bag...
CR1315	CP868569 Crenolanib	670220-88-9	≥98% (HPLC)	1g/bag 5g/bag...
CR1316	wp1130	856243-80-6	≥98% (HPLC)	1g/bag 5g/bag...
CR1317	AZ3146	1124329-14-1	≥99% (HPLC)	1g/bag 5g/bag...
CR1318	PH797804	586379-66-0	≥99% (HPLC)	1g/bag 5g/bag...
CR1319	cx5461	1138549-36-6	≥99% (HPLC)	1g/bag 5g/bag...
CR1320	Torin 2	1223001-51-1	≥99% (HPLC)	1g/bag 5g/bag...
CR1321	CH 5424802	1256580-46-7	≥99% (HPLC)	1g/bag 5g/bag...
CR1322	BAN ORL 24	475150-69-7	≥99% (HPLC)	1g/bag 5g/bag...
CR1323	AZD1480	935666-88-9	≥99% (HPLC)	1g/bag 5g/bag...
CR1324	AM2201	335161-24-5	≥99% (HPLC)	1g/bag 5g/bag...
CR1325	NVP-AEW541	475488-34-7	≥98% (HPLC)	1g/bag 5g/bag...
CR1326	Bafetinib	887650-05-7	≥99% (HPLC)	1g/bag 5g/bag...
CR1327	GDC0980	1032754-93-0	≥98% (HPLC)	1g/bag 5g/bag...
CR1328	Ornoprostil	70667-26-4	≥99% (HPLC)	1g/bag 5g/bag...
CR1329	Almorexant	871224-64-5	≥98% (HPLC)	1g/bag 5g/bag...
CR1330	Tazasubrate	79071-15-1	≥99% (HPLC)	1g/bag 5g/bag...
CR1331	MK-0812	624733-88-6	≥98% (HPLC)	1g/bag 5g/bag...
CR1332	amg900	945595-80-2	≥98% (HPLC)	1g/bag 5g/bag...
CR1333	AS6052040	648450-29-7	≥98% (HPLC)	1g/bag 5g/bag...
CR1334	Rotigotine	92206-54-7	≥98% (HPLC)	1g/bag 5g/bag...
CR1335	Rotigotine hydrochloride	125572-93-2	≥98% (HPLC)	1g/bag 5g/bag...
CR1336	PF-04217903	956905-27-4	≥98% (HPLC)	1g/bag 5g/bag...
CR1337	CAY10505	1218777-13-9	≥98% (HPLC)	1g/bag 5g/bag...
CR1338	AS-604850	648449-76-7	≥98% (HPLC)	1g/bag 5g/bag...
CR1330	WZ4002	1213269-23-8	≥98% (HPLC)	1g/bag 5g/bag...
CR1340	Ki20227	623142-96-1	≥98% (HPLC)	1g/bag 5g/bag...
CR1341	ZSTK474	475110-96-4	≥98% (HPLC)	1g/bag 5g/bag...
CR1342	YM201636	371942-69-7	≥98% (HPLC)	1g/bag 5g/bag...
CR1343	TGX221	663619-89-4	≥98% (HPLC)	1g/bag 5g/bag...
CR1344	PIK-75	945619-31-8	≥98% (HPLC)	1g/bag 5g/bag...
CR1345	PI-93	593960-11-3	≥98% (HPLC)	1g/bag 5g/bag...
CR1346	CI-1033	289499-45-2	≥98% (HPLC)	1g/bag 5g/bag...

CR1347	CC-401	395104-30-0	≥98% (HPLC)	1g/bag 5g/bag...
CR1348	AT-7519	902135-91-5	≥98% (HPLC)	1g/bag 5g/bag...
CR1349	PCI-32765	936563-96-1	≥98% (HPLC)	1g/bag 5g/bag...
CR1350	AMG-Tie2	870223-96-4	≥98% (HPLC)	1g/bag 5g/bag...
CR1351	AMG-47	882663-88-9	≥98% (HPLC)	1g/bag 5g/bag...
CR1352	Akt-1-1	473382-39-7	≥98% (HPLC)	1g/bag 5g/bag...
CR1353	PD173955	260415-63-2	≥98% (HPLC)	1g/bag 5g/bag...
CR1354	SNS-032 BMS-3870032	345627-80-7	≥98% (HPLC)	1g/bag 5g/bag...
CR1355	YK 4-279	1037184-44-3	≥98% (HPLC)	1g/bag 5g/bag...
CR1356	(R)-Lansoprazole	138530-94-6	≥98% (HPLC)	1g/bag 5g/bag...
CR1357	dovitinib lactate	915769-50-5	≥98% (HPLC)	1g/bag 5g/bag...
CR1358	BMS-946815	244154-66-3	≥98% (HPLC)	1g/bag 5g/bag...
CR1359	selamectin	165108-07-6	≥98% (HPLC)	1g/bag 5g/bag...
CR1360	LY2228820	862507-23-1	≥98% (HPLC)	1g/bag 5g/bag...
CR1361	LDN193189	1062368-24-4	≥98% (HPLC)	1g/bag 5g/bag...
CR1362	S31-201 OTAVA-BB 7070707021	501919-59-1	≥98% (HPLC)	1g/bag 5g/bag...
CR1363	Posaconazole	171228-49-2	≥98% (HPLC)	1g/bag 5g/bag...
CR1364	4SC-201 (resminostat, BYK 408740)	864814-88-0	≥98% (HPLC)	1g/bag 5g/bag...
CR1365	SB 203580	152121-47-6	≥98% (HPLC)	1g/bag 5g/bag...
CR1366	Belinostat (PXD101)	414864-00-9	≥98% (HPLC)	1g/bag 5g/bag...
CR1367	PD98059	167869-21-8	≥98% (HPLC)	1g/bag 5g/bag...
CR1368	PI-103	371935-74-9	≥98% (HPLC)	1g/bag 5g/bag...
CR1369	CTP-518		≥98% (HPLC)	1g/bag 5g/bag...
CR1370	AZD8931	848942-61-0	≥98% (HPLC)	1g/bag 5g/bag...
CR1371	R04929097;R0-4929097	847925-91-1	≥98% (HPLC)	1g/bag 5g/bag...
CR1372	MRE-269	475085-57-5	≥98% (HPLC)	1g/bag 5g/bag...
CR1373	RAF265 CHIR-265	927880-90-8	≥98% (HPLC)	1g/bag 5g/bag...
CR1374	GDC-0879	905281-76-7	≥98% (HPLC)	1g/bag 5g/bag...
CR1375	ABT-263	923564-51-6	≥98% (HPLC)	1g/bag 5g/bag...
CR1376	SU-5402	215543-92-3	≥98% (HPLC)	1g/bag 5g/bag...
CR1377	SNS-032	345627-92-1	≥98% (HPLC)	1g/bag 5g/bag...
CR1378	LY2811376	1194044-20-6	≥98% (HPLC)	1g/bag 5g/bag...
CR1379	PF-04971729	1210344-57-2	≥98% (HPLC)	1g/bag 5g/bag...
CR1380	FG-4592	808118-40-3	≥98% (HPLC)	1g/bag 5g/bag...
CR1381	AZ960	905586-69-8	≥98% (HPLC)	1g/bag 5g/bag...
CR1382	Canagliflozin	842133-18-0	≥98% (HPLC)	1g/bag 5g/bag...

CR1383	AS-252424	900515-16-4	≥98% (HPLC)	1g/bag 5g/bag...
CR1384	NU 7441 , KU 57788	503468-95-9	≥98% (HPLC)	1g/bag 5g/bag...
CR1385	SRT3109	1204707-71-0	≥98% (HPLC)	1g/bag 5g/bag...
CR1386	CHIR99021	252917-06-9	≥98% (HPLC)	1g/bag 5g/bag...
CR1387	BMS-790052	1214735-16-6	≥98% (HPLC)	1g/bag 5g/bag...
CR1388	MG-132	133407-82-6	≥98% (HPLC)	1g/bag 5g/bag...
CR1389	SB590885 GSK2118436	405554-55-4	≥98% (HPLC)	1g/bag 5g/bag...
CR1390	CCT128930	885499-61-6	≥98% (HPLC)	1g/bag 5g/bag...
CR1391	SNX-2112	908112-43-6	≥98% (HPLC)	1g/bag 5g/bag...
CR1392	mk0752	471905-41-6	≥98% (HPLC)	1g/bag 5g/bag...
CR1393	Perifosine	157716-52-4	≥98% (HPLC)	1g/bag 5g/bag...
CR1394	PF-562271	939791-38-5	≥98% (HPLC)	1g/bag 5g/bag...
CR1395	PD0332991	571190-30-2	≥98% (HPLC)	1g/bag 5g/bag...
CR1396	Tipifarnib (Zarnestra) IND 58359, R115777	192185-72-1	≥98% (HPLC)	1g/bag 5g/bag...
CR1397	U0126	1173097-76-1	≥98% (HPLC)	1g/bag 5g/bag...
CR1398	A 769662	844499-71-4	≥98% (HPLC)	1g/bag 5g/bag...
CR1399	GSK256066	801312-28-7	≥98% (HPLC)	1g/bag 5g/bag...
CR1400	DCC-2036	1020172-07-9	≥98% (HPLC)	1g/bag 5g/bag...
CR1401	ADL-5859	850173-95-4	≥98% (HPLC)	1g/bag 5g/bag...
CR1402	Merck-5 JAK INHIBITOR I	457081-03-7	≥98% (HPLC)	1g/bag 5g/bag...
CR1403	CPI-613	95809-78-2	≥98% (HPLC)	1g/bag 5g/bag...
CR1404	MK-1775	955365-80-7	≥98% (HPLC)	1g/bag 5g/bag...
CR1405	KN-62	127191-97-3	≥98% (HPLC)	1g/bag 5g/bag...
CR1406	H-89 2HCL	127243-85-0	≥98% (HPLC)	1g/bag 5g/bag...
CR1407	Org 27569	868273-06-7	≥98% (HPLC)	1g/bag 5g/bag...
CR1408	Palomid 529 (P529)	914913-88-5	≥98% (HPLC)	1g/bag 5g/bag...
CR1409	Regorafenib (BAY 73-4506)	755037-03-7	≥98% (HPLC)	1g/bag 5g/bag...
CR1410	VX-765	273404-37-8	≥98% (HPLC)	1g/bag 5g/bag...
CR1411	PKI-587	1197160-78-3	≥98% (HPLC)	1g/bag 5g/bag...
CR1412	CYC-116	693228-63-6	≥98% (HPLC)	1g/bag 5g/bag...
CR1413	Pazopanib HCL	635702-64-6	≥98% (HPLC)	1g/bag 5g/bag...
CR1414	GSK1904529A	1089283-49-7	≥98% (HPLC)	1g/bag 5g/bag...
CR1415	AZD5438	602306-29-6	≥98% (HPLC)	1g/bag 5g/bag...
CR1416	Volasertib BI6727	755038-65-4	≥98% (HPLC)	1g/bag 5g/bag...
CR1417	Amuvatinib MP-470	850879-09-3	≥98% (HPLC)	1g/bag 5g/bag...
CR1418	Raltegravir	518048-05-0	≥98% (HPLC)	1g/bag 5g/bag...

CR1419	SB-737050-A	630407-66-8	≥98% (HPLC)	1g/bag 5g/bag...
CR1420	rilpivirine	500287-72-9	≥98% (HPLC)	1g/bag 5g/bag...
CR1421	R00335	867365-76-2	≥98% (HPLC)	1g/bag 5g/bag...
CR1422	Ki16425	355025-24-0	≥98% (HPLC)	1g/bag 5g/bag...
CR1423	TG101209	936091-14-4	≥98% (HPLC)	1g/bag 5g/bag...
CR1424	TG101348	936091-26-8	≥98% (HPLC)	1g/bag 5g/bag...
CR1425	PF-00562271	717907-75-0	≥98% (HPLC)	1g/bag 5g/bag...
CR1426	URB597	546141-08-6	≥98% (HPLC)	1g/bag 5g/bag...
CR1427	Enzastaurin (LY317615)	170364-57-5	≥98% (HPLC)	1g/bag 5g/bag...
CR1428	aprepitant MK-0869	170729-80-3	≥98% (HPLC)	1g/bag 5g/bag...
CR1429	Cidofovir hydrate	149394-66-1	≥98% (HPLC)	1g/bag 5g/bag...
CR1430	Cidofovir	113852-37-2	≥98% (HPLC)	1g/bag 5g/bag...
CR1431	BIBR-953 (Dabigatran)	211914-51-1	≥98% (HPLC)	1g/bag 5g/bag...
CR1432	Dabigatran etexilate	211915-06-9	≥98% (HPLC)	1g/bag 5g/bag...
CR1433	cyclopamine	4449-51-8	≥98% (HPLC)	1g/bag 5g/bag...
CR1434	abiraterone Acetate	154229-18-2	≥98% (HPLC)	1g/bag 5g/bag...
CR1435	abiraterone	154229-19-3	≥98% (HPLC)	1g/bag 5g/bag...
CR1436	TAK-901	934541-31-8	≥98% (HPLC)	1g/bag 5g/bag...
CR1437	Roscovitine (CYC202, Seliciclib)	186692-46-6	≥98% (HPLC)	1g/bag 5g/bag...
CR1438	MK-8245	1030612-90-8	≥98% (HPLC)	1g/bag 5g/bag...
CR1439	NVP-TAE684	761439-42-3	≥98% (HPLC)	1g/bag 5g/bag...
CR1440	Motesanib diphosphate	857876-30-3	≥98% (HPLC)	1g/bag 5g/bag...
CR1441	Motesanib AMG 706	453562-69-1	≥98% (HPLC)	1g/bag 5g/bag...
CR1442	PD 173074	219580-11-7	≥98% (HPLC)	1g/bag 5g/bag...
CR1443	Lonafarnib, Sch-66336	193275-84-2	≥98% (HPLC)	1g/bag 5g/bag...