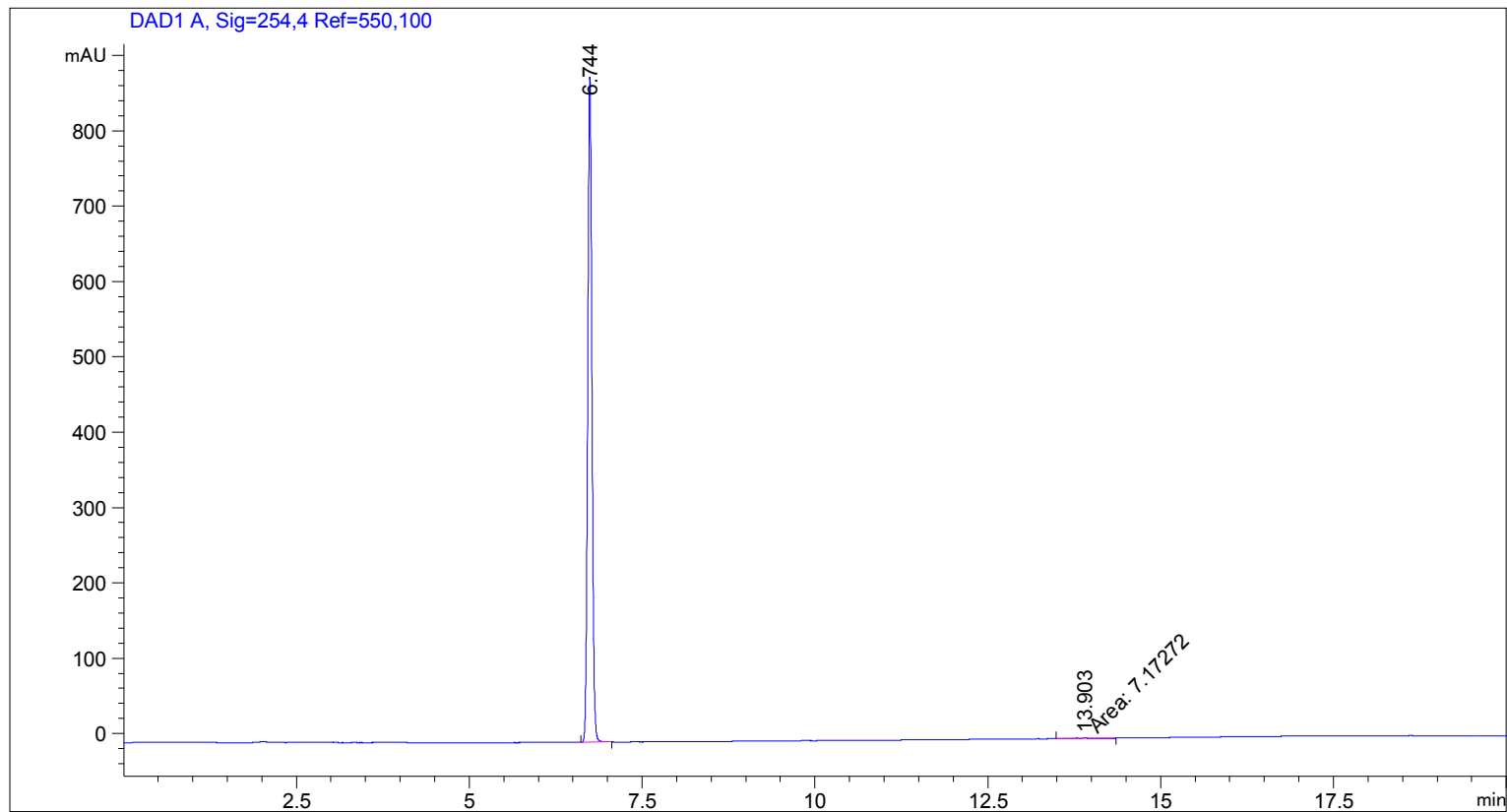


=====
 Acq. Operator : SYSTEM
 Acq. Instrument : 12601c

Seq. Line : 2
 Location : Vial 54

Inj Volume : 2.000 µl

Additional Info : Peak(s) manually integrated



=====
 Area Percent Report
 =====

Sorted By : Signal
 Multiplier : 1.0000
 Dilution : 1.0000
 Use Multiplier & Dilution Factor with ISTDs

Signal 1: DAD1 A, Sig=254,4 Ref=550,100

Peak #	RetTime [min]	Type	Width [min]	Area [mAU*s]	Height [mAU]	Area %
1	6.744	BB	0.0660	3749.09180	882.99628	99.8090
2	13.903	MM	0.2078	7.17272	5.75228e-1	0.1910

Totals : 3756.26452 883.57150

=====
 *** End of Report ***