



Certificate of analysis

Productname: Pomalidomide

Cas number: 19171-19-8

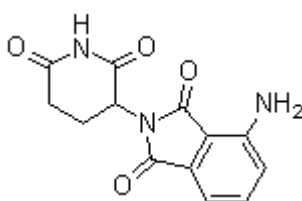
Molecular Formula: C₁₃H₁₁N₃O₄

Molecular Weight: 273.24

Date of production: Nov. 25, 2016

Batch NO: 20161125

Exp Date: Nov. 24, 2018



Chemical structure:

Items	Specifications	Results
Appearance	Yellow powder	Conforms
Identification	HPLC, NMR	Conforms
Solubility	Practically insolubale in water andethanol,very soluble in dimethylsulfoxide	Conforms
Water	≤0.5%	0.10%
Residue on Ignition	≤0.1%	0.04%
Related substance	Single maximum impurity≤0.1% Total impurities≤1.0%	0.09% 0.1%
Residual solvents(By GC)	Ethanol≤5000ppm Methanol≤3000ppm Dimethyl sulfoxide≤5000ppm N,N-Dimethylformamide≤880ppm Acetic acid≤5000ppm Methyl tert-tutyl ether≤5000ppm	300ppm N.D N.D 350ppm N.D N.D
PSD	D(90)10-50microns	42.5 microns
Assay(HPLC)	≥99.0%	99.9%

Conclusion: It complies with the Enterprise Standard.

Analyst:Zhao

Checker:Liu

Q.C Director. Fang F